



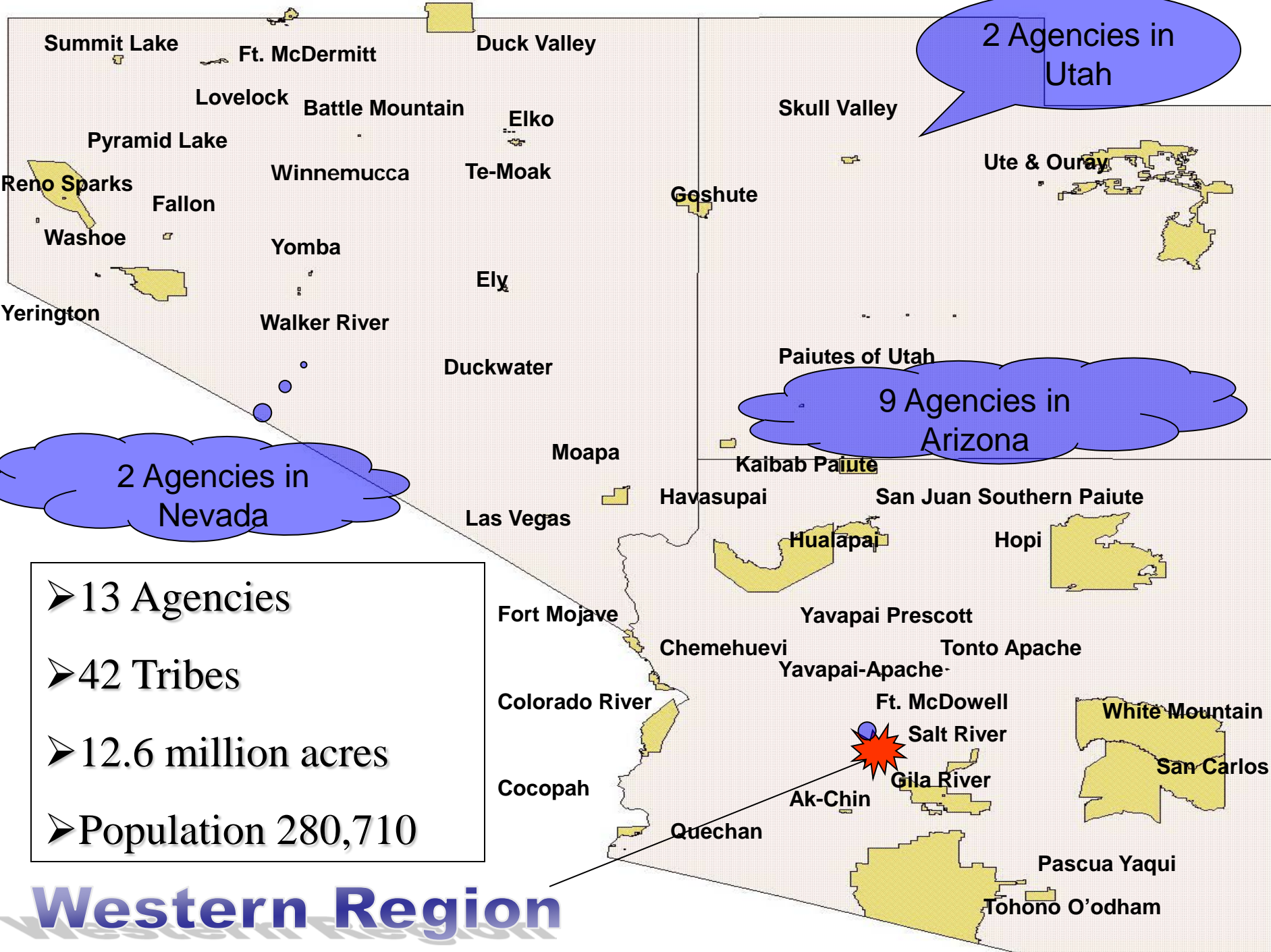
BIA Budget Formulation 2018

Tribes Served by the BIA Western Region

Mervin Wright, Councilman,
Pyramid Lake Paiute Tribe

Terry Rambler, Chairman, San
Carlos Apache Tribe





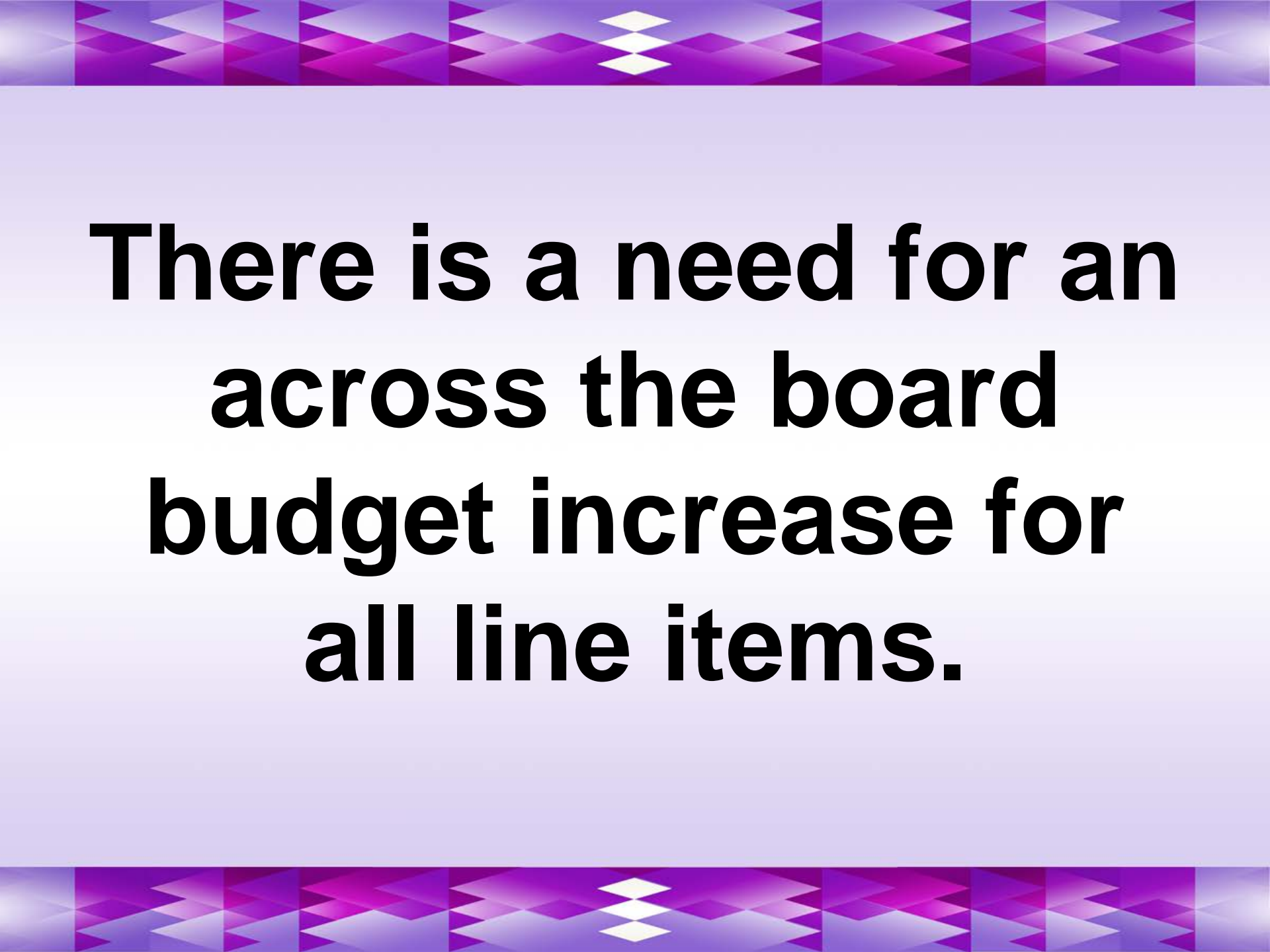
2 Agencies in Utah

9 Agencies in Arizona

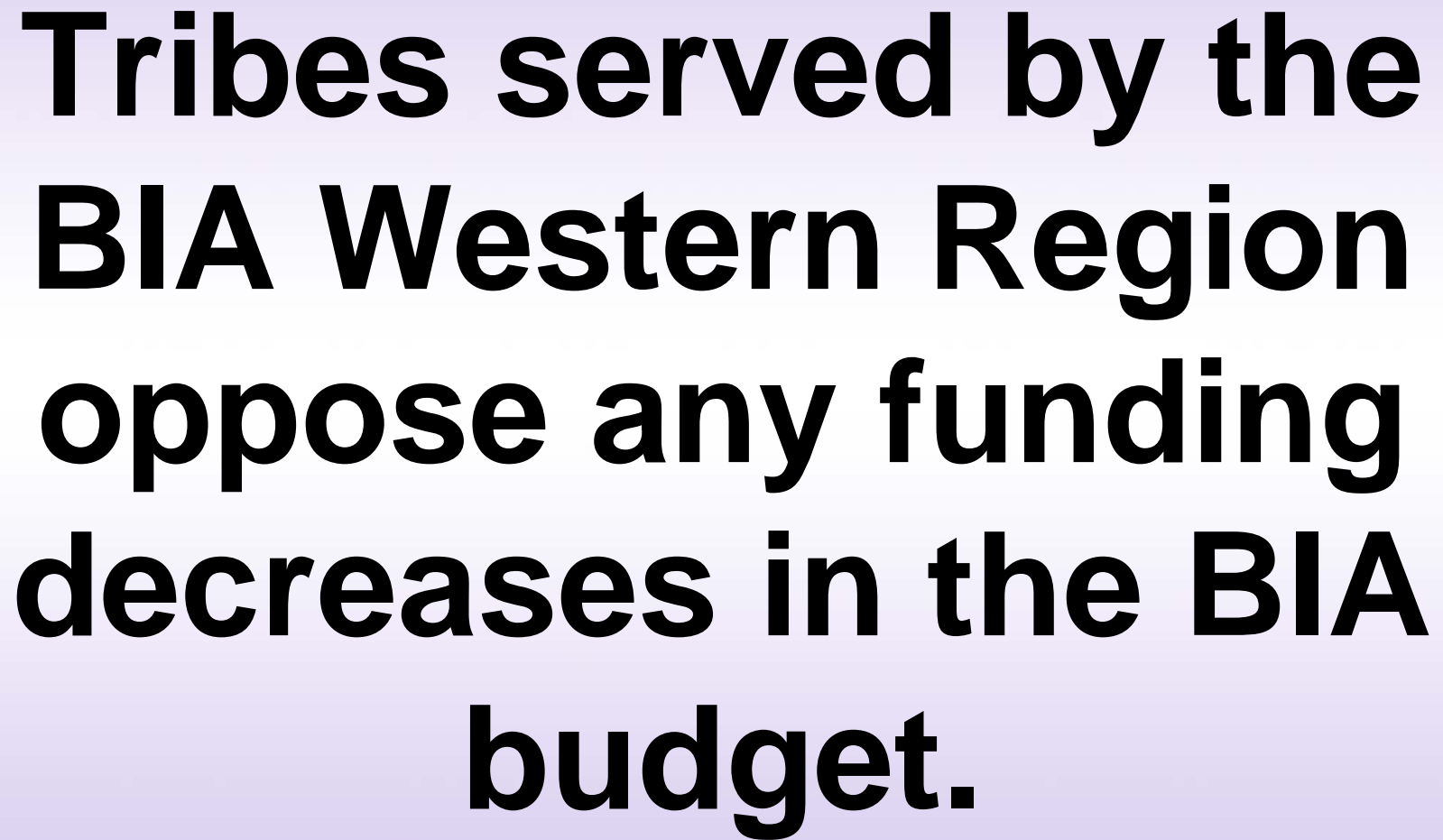
2 Agencies in Nevada

- 13 Agencies
- 42 Tribes
- 12.6 million acres
- Population 280,710

Western Region



**There is a need for an
across the board
budget increase for
all line items.**




**Tribes served by the
BIA Western Region
oppose any funding
decreases in the BIA
budget.**



Methodology

Tribes and Agencies submitted their budget requests. All budget requests were incorporated into the BIA Western Region budget formulation proportionately to an 8% funding increase. The top 10 funding requests by line item include a narrative which demonstrates the need.



Top Ten Budget Requests by Frequency

1) Criminal Investigations and Police Services	\$11,468,890
2) Road Maintenance	\$8,241,500
3) Welfare Assistance	\$5,671,000
4) Social Services	\$4,271,170
5) Detentions/Corrections	\$3,459,000
6) Housing Program	\$3,250,870
7) Forestry Program	\$2,686,000
8) Tribal Courts	\$1,997,690
9) Scholarships and Adult Education	\$1,946,000
10) Agriculture	\$1,757,890

Criminal Investigations

- Additional funding will be used to provide training for tribal police officers for criminal investigations, for POST certifications, and special unit requirements for equipment and other police services.
- This funding will be used to bring tribal police departments up to date with the technically advanced equipment, computers, computer software, and reporting modulation requirements.
- Accountability will be enhanced with this increase in funding for investigative report with case management.




Road Maintenance

- For the Western Region:
 - 356.2 miles out of a total of 6,297.9, 5.6%, miles of BIA roads are in acceptable condition.
 - 95% of roads are in unacceptable condition.
 - 127 Bridges out of 212, 59%, are in acceptable condition
- Bad roads are especially a concern since many of the Tribes are located in remote locations and are rural in nature.





Welfare Assistance

- The limited funding causes tribes to exhaust Welfare Assistance funding as soon as two to three months into the funding cycle
 - Leaves tribes without any ability to provide Welfare Assistance programs to its clients.
 - Child and family development and support services worker ratios normally exceed the 17:1 Child Welfare League of America ratio; case workers are tasked at two and three times this national standard.
- 

Social Services

- Native families are exposed to domestic violence and child endangerment situations at a higher rate than in non-native communities due to the interrelated problems of poverty, violence, and substance & child abuse faced by native communities.



- Costs for child placement using inter-departments and outside agencies is a serious limiting factor with tribal social services with costs exceeding the allocated amounts.

Detention/Corrections

- Increase funding would be used to support staffing, and update obsolete equipment and computer software.
- In the Western Region, there are two BIA facilities and one holding facility and 8 tribally-run facilities. Of the 8 tribally-run facilities, six include juvenile facilities.
- Tribes served by the BIA Western Region support initiatives that address "alternatives to incarceration" strategies that seek to address underlying causes of repeat offenses.



Success Stories

- Law Enforcement Success Story
- Road Maintenance Success Story





Thank you

Budget Formulation Team

Mervin Wright, Councilman, Pyramid Lake Paiute Tribe

Terry Rambler, Chairman, San Carlos Apache Tribe

Travis L. Lane, Assistant Director, Inter Tribal Council of Arizona

Waquin Preston, Project Coordinator, Inter Tribal Council of Arizona

Cathy Black, Budget Officer, BIA Western Regional Office

Michael Nutter, Budget Analyst, BIA Western Regional Office

Tyrone Shipman, Regional Staff Assistant, BIA Western Regional Office

Office

